

Deehan Landscaping Inc.

PO Box 3687 • Merrifield, VA 22116

O: 703.849.8226 • F: 703.849.8229

www.deehan.com • info@deehan.com



LANDSCAPE MAINTENANCE SERVICES



Lawn Mowing: Prior to mowing, turf areas will be surveyed for trash, plant debris or other obstructions. Turf will be completely and evenly mowed at a height suitable for the species and the site conditions. In areas unreachable with a lawnmower, we will string trim the turf to the approximate height of the adjacent turf. We do not recommend the collection & removal of grass clippings. Turfgrass research shows that it is better to return clippings to the turf for nutritional replenishment and improved soil structure. This process, referred to as "grasscycling", is a tremendous help to our environment. However, if bagging is requested, all bagged clippings will be left at curbside for owners refuse collection service.

Edging: We will edge concrete borders, i.e., walkways, curbs and driveways during mowing visits as needed. Bed edges that have been established by a vertical trench method will also be edged as needed during the growing season.



Clean-Up: All ground level accessible concrete surfaces, patios, decks and parking areas will be blown clean of debris from the lawn and landscape maintenance process. This process may include the edges of bordering streets in some applications.



Mulching: We generally provide early spring (February – March) mulching using high quality, double shredded hard wood mulch or Virginia fines pine bark. All mulching will be applied according to recommended Virginia Tech Extension Service guidelines, so as to enhance and improve the health of your garden areas.



Mulch helps to control weeds, to retain soil moisture and also regulates soil temperatures thus reducing frost or heat related damage to root systems. Shrub and ornamental tree fertilization and pre-emergent weed control may also be performed at this time if desired.



Lawn Care Program: Our lawn care program includes fertilization and weed control. The species of your turf grass will dictate the type and rate of fertilizer we apply to your lawn. Our ultimate goal is to maintain the health of your lawn with minimal or zero pesticide use! We use long lasting granular products (where appropriate), and properly time the effectiveness. Only EPA registered products are used according to the labeled directions. Our professional service provides all that is reasonably and safely possible to minimize the spread of invasive lawn weeds and insects. Complete elimination of weeds and insects is not totally feasible, however, we do promise to safely apply the correct products, at the recommended rates to suppress undesirable conditions whenever possible.



Aeration & Overseeding: Accessible lawn areas will be core aerated with a mechanical aerator to relieve compaction, permit increased penetration of moisture and nutrients, and to provide a proper oxygen-soil ratio. Overseeding is performed with a slice seeder that provides seed to soil contact for higher germination rates. Overseeding and aeration occur during the same visit and are performed within the months of August, September, or October. This service along with the Lawn Care Program will thicken your turf, provide greener color, and increase resistance to disease and drought.



Pest Management: We believe that proper cultural practices such as correct mowing height, appropriate irrigation schedules and applying fertilizers and herbicides at the right time of year will help to reduce pest populations. Our insect management program includes methods that specify the minimum amount of applications necessary to achieve acceptable levels of pest populations. Pesticides will only be used when necessary according to manufacturer's recommendations in accordance with federal and state requirements under the supervision of a Virginia Certified Pesticide Applicator.



Deehan Landscaping Inc.

PO Box 3687 • Merrifield, VA 22116

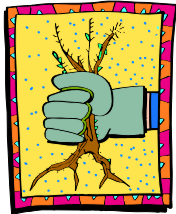
O: 703.849.8226 • F: 703.849.8229

www.deehan.com • info@deehan.com



TLC Weeding & Plant Care Visits: Shrub beds, natural areas with mulch, and groundcover areas will be weeded as specified in our custom contracts. We use Round-Up bio-degradable herbicide on weeds that we can safely treat without causing injury to surrounding ornamental plants. Other weeds found within the canopy of shrubs or ground covers will be removed by hand. Selected herbicides may be used for persistent perennial weeds and grass control as needed. Your planting areas should remain approximately 85% weed free.

However, a weed population will always exist in a fertile growing environment. Also, service is dead-spent flowers) of that have already only provides a will often initiate many perennials. These visits will also be used to evaluate the presence of disease or insect problems. You will be notified of any serious pest problems that require control measures.



TLC Shrub & Tree Pruning: It is important to remember that pruning of plants is a process, not an event. There is no one-day of the year that all plants are to be pruned. Each species has very specific pruning needs based on flower production and the local growing conditions. The first priority is pruning for optimal flower production, second is structural pruning for plant development and third is space management (*the most common need in mature landscapes*). Our employees are trained to recognize and care for the most common landscape plants in Northern Virginia. If you have extensive planting areas with unusual specimens, we will review proper pruning requirements. Specialty pruning instructions will be entered into your property notes for our technician's future reference.



Floriculture:

Seasonal color beds are used to draw attention to entryways of properties, highlight sign areas or enhance views through the landscape. In Northern Virginia, there are two seasons for annual flowers. Summer annuals are installed April through June. Winter annuals are installed September through December. There are countless types of annual flowers, which are available in dozens of colors. It is our job to recognize the specific site conditions you have and match the proper plants in a unique display.



Seasonal color beds are used to draw attention to entryways of properties, highlight sign areas or enhance views through the landscape. In Northern Virginia, there are two seasons for annual flowers. Summer annuals are installed April through June. Winter annuals are installed September through December. There are countless types of annual flowers, which are available in dozens of colors. It is our job to recognize the specific site conditions you have and match the proper plants in a unique display.

Our floriculture program includes:

- Remove existing annual plants
- Prune back plants that infringe on annual planting space
- Add soil amendments, till and re-grade soil
- Install creative floral display
- Apply systemic insecticide and pre-emergent herbicide to control weeds
- Apply up to 2" layer of mulch
- Clean-up site thoroughly and remove debris
- Initial fertilization & watering to a depth of 4"-6"

We guarantee our annual flower program will provide you with a colorful display to enjoy and admire throughout the season. We ask you to monitor and water the plants *daily* during the first *two weeks of establishment*. They will also need frequent watering during periods of drought throughout the summer.



Leaf Management: Fallen leaves shall be disposed of from lawn areas using all means available including blowing, raking, vacuuming, and mowing/mulching to maintain a neat appearance. Most properties will require at least two leaf cleanups performed with late season mowing visits, followed by one final leaf removal service. Where applicable, natural recycling of leaves will be utilized in the recycling of leaves to provide the natural woodland floor and reduce costs for our clients. Upon special request, we will shred leaf debris and place it back into planting beds or compost bins.



Gutter Cleaning: Leaves and debris will be removed from the roof and gutters to allow for the proper water flow of storm water away from the building. Keeping the gutters free of debris also reduces the accumulation of ice in the gutters during the winter months. This service is typically offered twice per year (spring and fall after the leaf debris has fallen from the trees).



Snow Management: Snow management services will be provided for all paved driving lanes and sidewalks. Services will begin automatically when snow accumulation reaches two inches. Ice melting products and sand may also be applied if desired.

